



General Certificate of Secondary Education  
Higher Tier  
June 2011

# **Geography (Specification A)**

**40301H**

**Unit 1 Physical Geography**

**Insert**

**Figure 1**



Figure 2

A



B



C



D



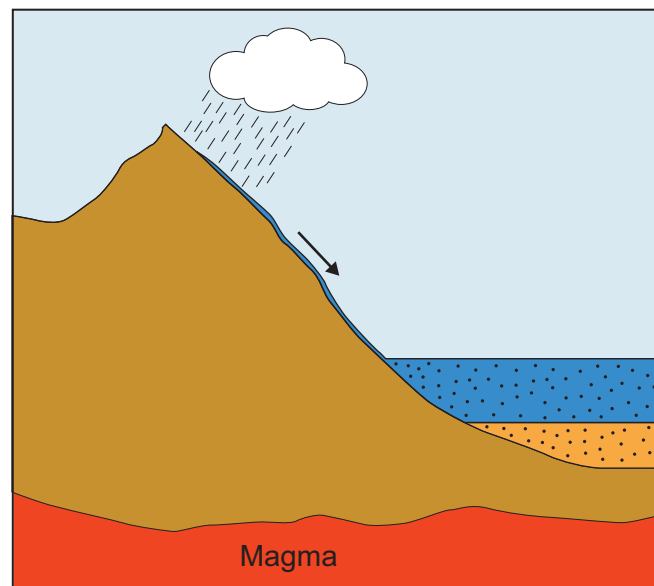
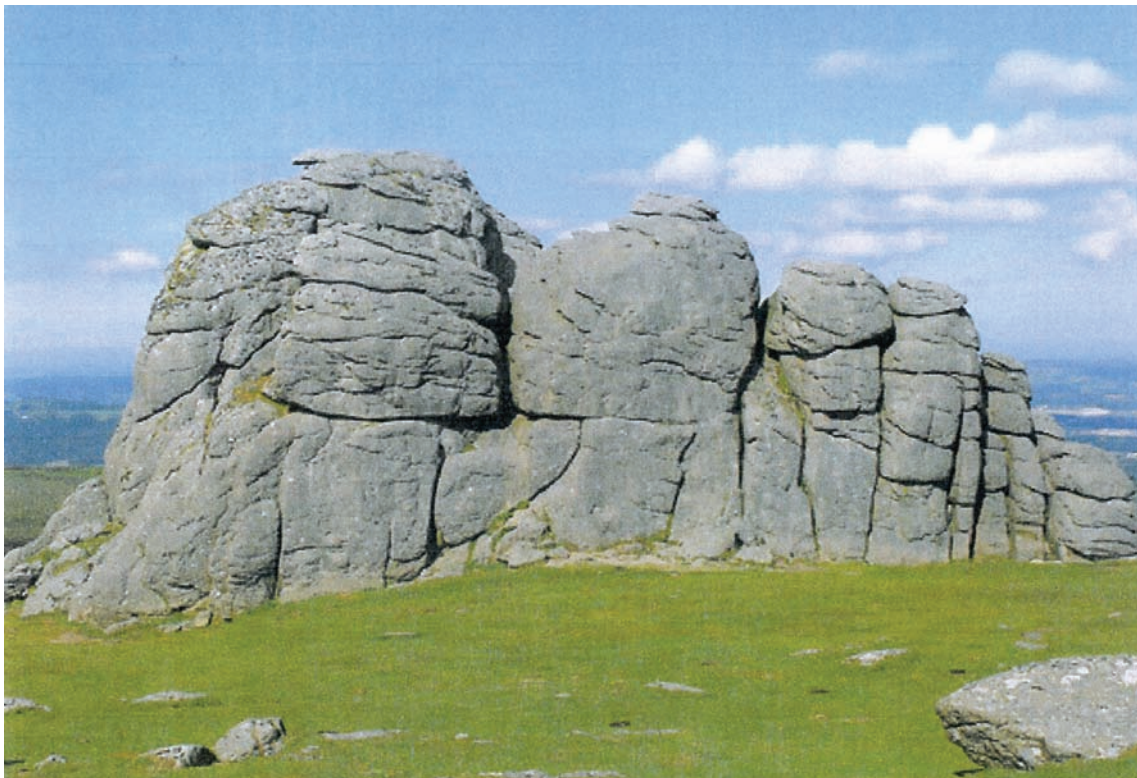
**Figure 3****Figure 4**

Figure 6

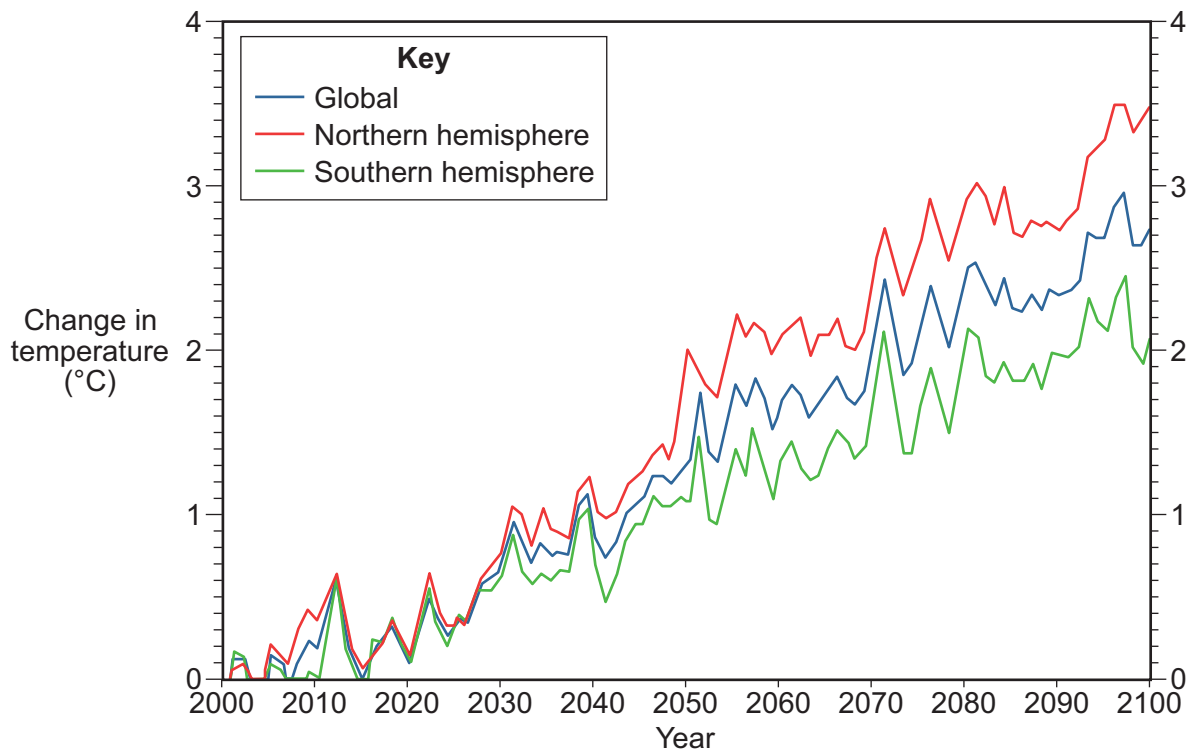
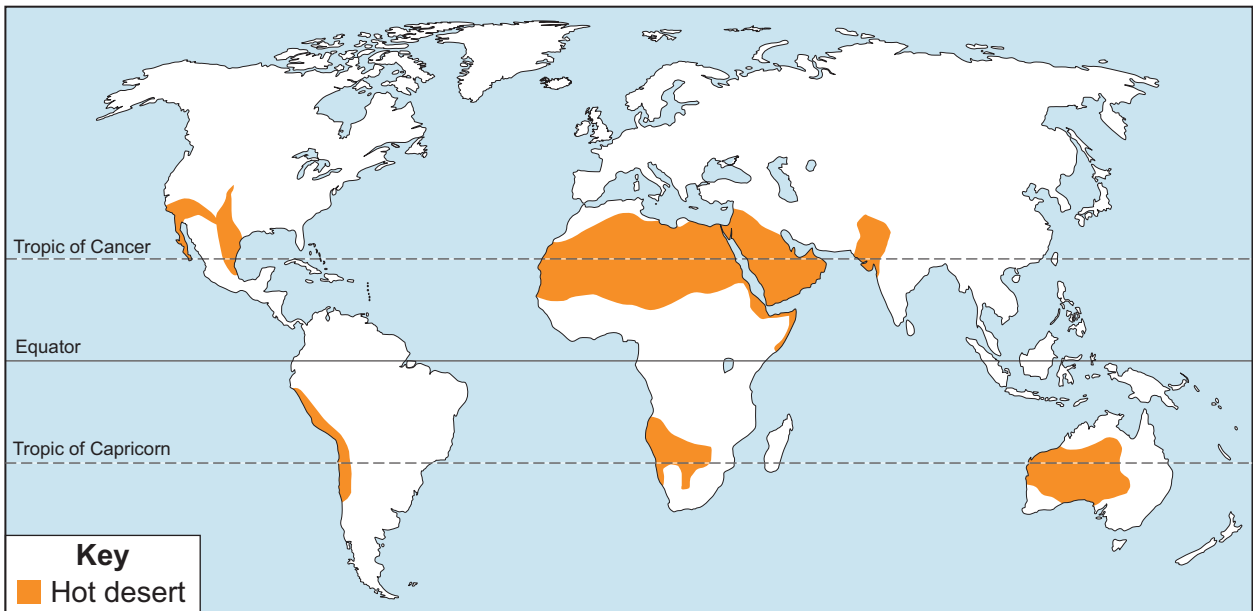


Figure 7

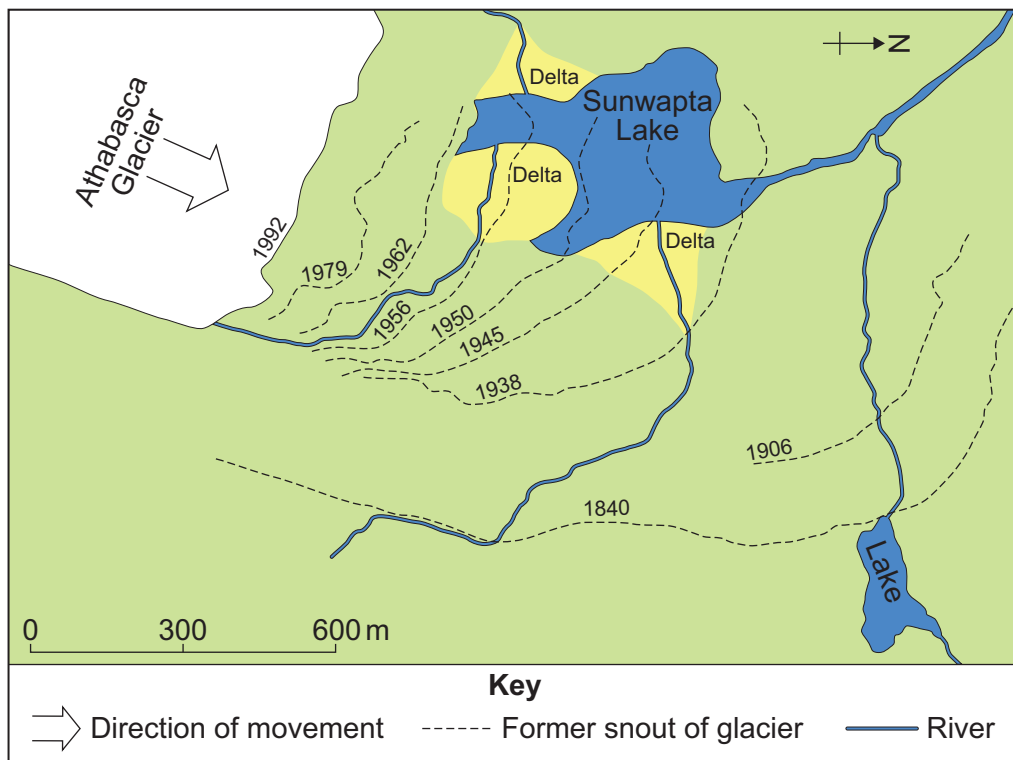


**Figure 8****A****B****C**

**Figure 9**



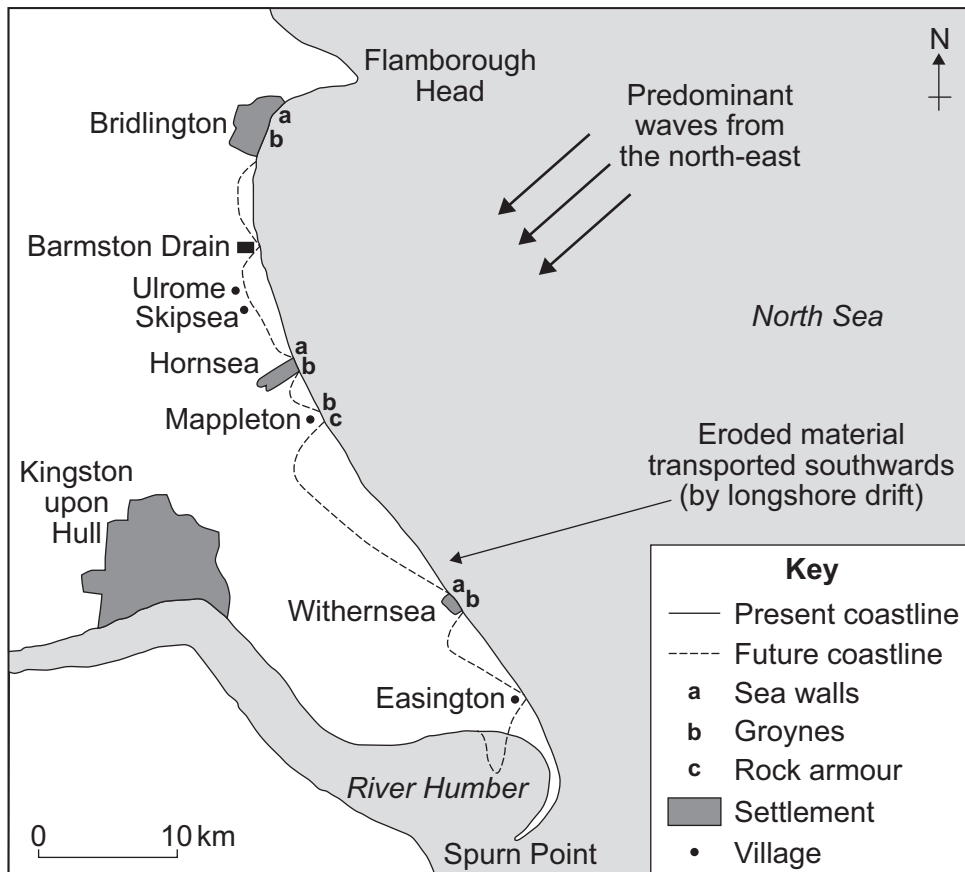
Figure 12



**Figure 13****Turn over ►**

**Figure 14**

Figure 15



#### ACKNOWLEDGEMENT OF COPYRIGHT-HOLDERS AND PUBLISHERS

Permission to reproduce all copyright material has been applied for. In some cases, efforts to contact copyright-holders have been unsuccessful and AQA will be happy to rectify any omissions of acknowledgements in future papers if notified.

- Figure 1: Getty Images  
Figure 2: A, B & C: Getty Images  
D: [www.indialine.com](http://www.indialine.com)  
Figure 4: © Jay Lethbridge  
Figure 6: © Crown Copyright 2008, the Met Office  
Figure 7: Olly Phillipson, Longman Student Atlas, Pearson Education Ltd  
Figure 8: A & B: Thinkstock Photos  
C: Robert J. Erwin/Science Photo Library  
Figure 9: Geog.GCSE, Anna King, Chris Stevens, John Edwards, Catherine Hurst, Susan Mayhew, Jack Mayhew (2006), Oxford University Press. Photo: John Farmer/Edoscene  
Figure 12: Exploring the Columbia Icefield, Richard Kucera, (1990) High Country  
Figure 14: Keith Bartlett  
Figure 15: Adapted with the permission of Nelson Thomas Ltd from GeoActive Online Series 20, Unit 407 – Philip Ellis